



# ADAPTIVE REUSE OF HISTORIC SCHOOLS

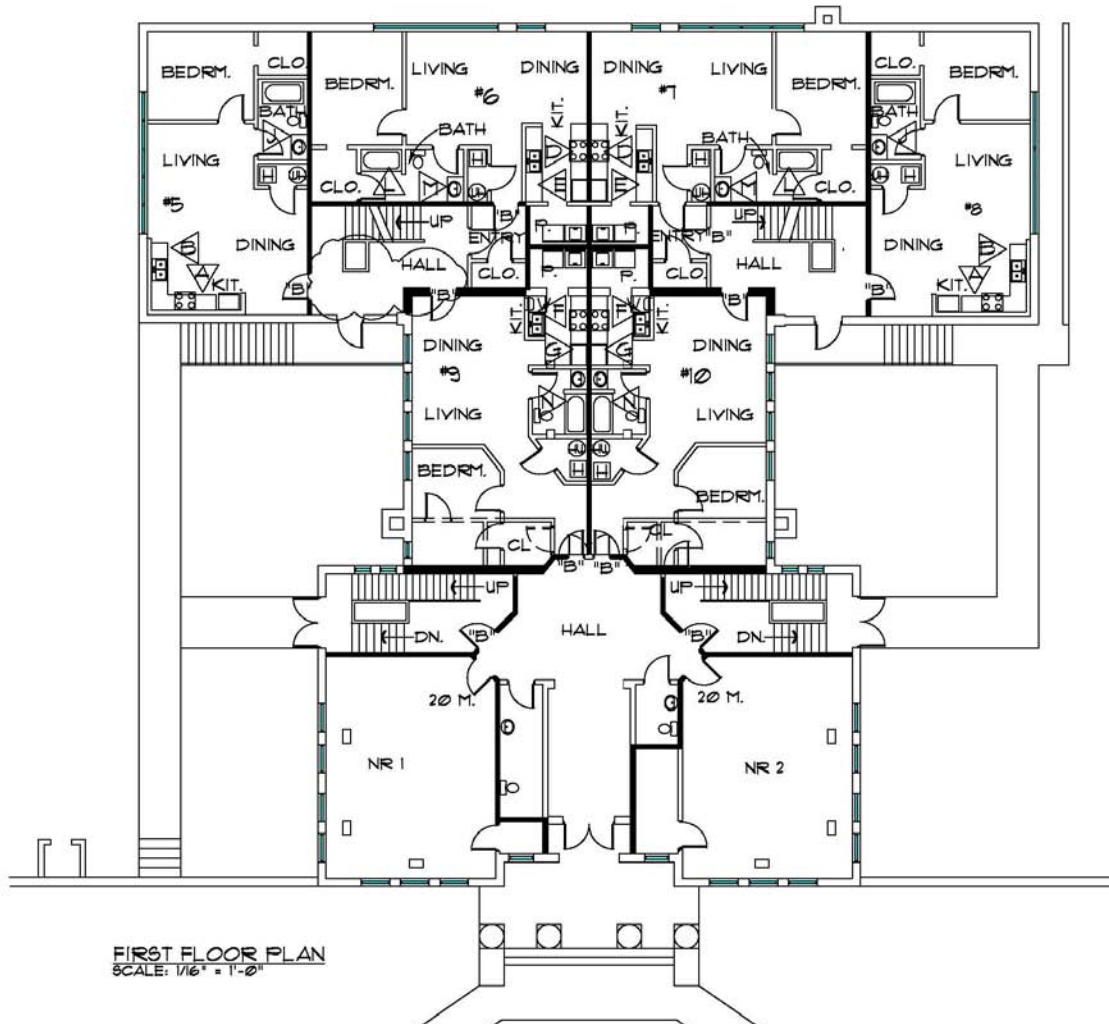
**Presented by:**  
**Martin Meek, President**  
**Campbell Meek and Associates, Architects, Inc.**



Central School  
Central South Carolina



# First floor plan



# Interior Stairway



# New windows





Central School  
Bessemer City, NC



# New handicap entrance





# New fire stair & playground equipment





Rehabilitated  
windows



# Restoration of Theater



Excellent use for Community space for tenants and the community itself

# Interior Corridors



# First Floor Plan

UNIT 101 635 SQ. FT. 1 br  
 UNIT 104 663 SQ. FT. 1 br  
 UNIT 105 142 SQ. FT. 1 br  
 UNIT 106 701 SQ. FT. 1br / H/C  
 UNIT 107 663 SQ. FT. 1br  
 UNIT 108 630 SQ. FT. 1br  
 UNIT 112 635 SQ. FT. 1br

635 AVERAGE SQ. FT.

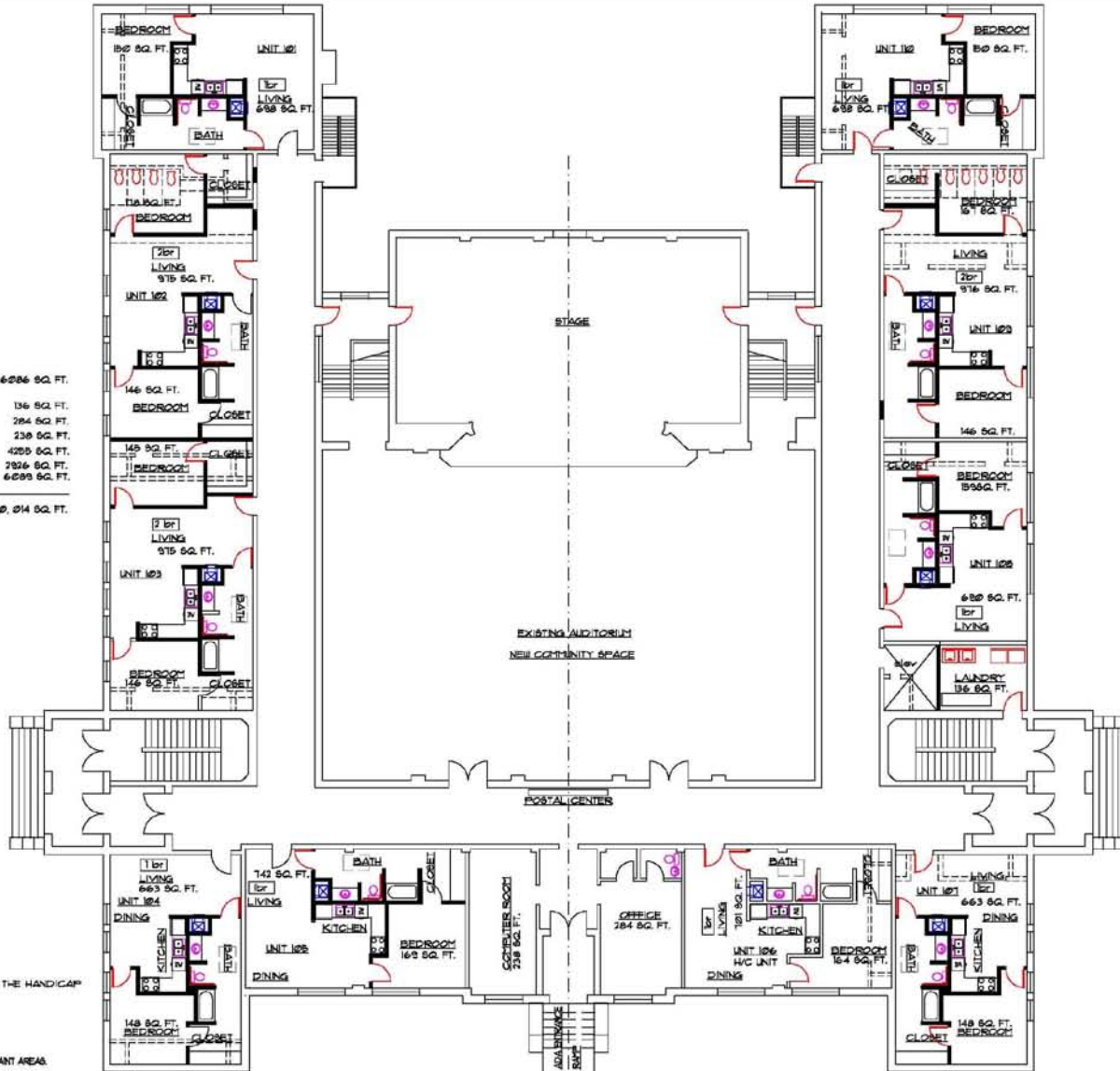
UNIT 102 975 SQ. FT. 2 br  
 UNIT 103 975 SQ. FT. 2 br  
 UNIT 109 976 SQ. FT. 2 br

975 3 AVERAGE SQ. FT.

TOTAL GROSS AREA OF AUDITORIUM AND STAGE  
 (NEW COMMUNITY SPACE) 6286 SQ. FT.  
 TOTAL NET AREA OF LAUNDRY 136 SQ. FT.  
 TOTAL NET AREA OF OFFICE 284 SQ. FT.  
 TOTAL NET AREA OF COMPUTER ROOM 238 SQ. FT.  
 TOTAL NET AREA OF 1 BR. UNITS 4255 SQ. FT.  
 TOTAL NET AREA OF 2 BR. UNITS 2826 SQ. FT.  
 TOTAL GROSS AREA OF WALLS, STAIRS AND HALLS 6099 SQ. FT.

TOTAL GROSS AREA THIS FLOOR 20,014 SQ. FT.

NOTE: DESIGN WILL INCORPORATE FEATURES  
 AS DESCRIBED IN EXHIBIT "B"  
 NET AREA - STAIRS 856 SQ. FT.



1-1 BEDROOM  
 2-2 BEDROOM

10 UNITS THIS FLOOR WITH 1 UNIT FOR THE HAND CAP

FIRST FLOOR PLAN

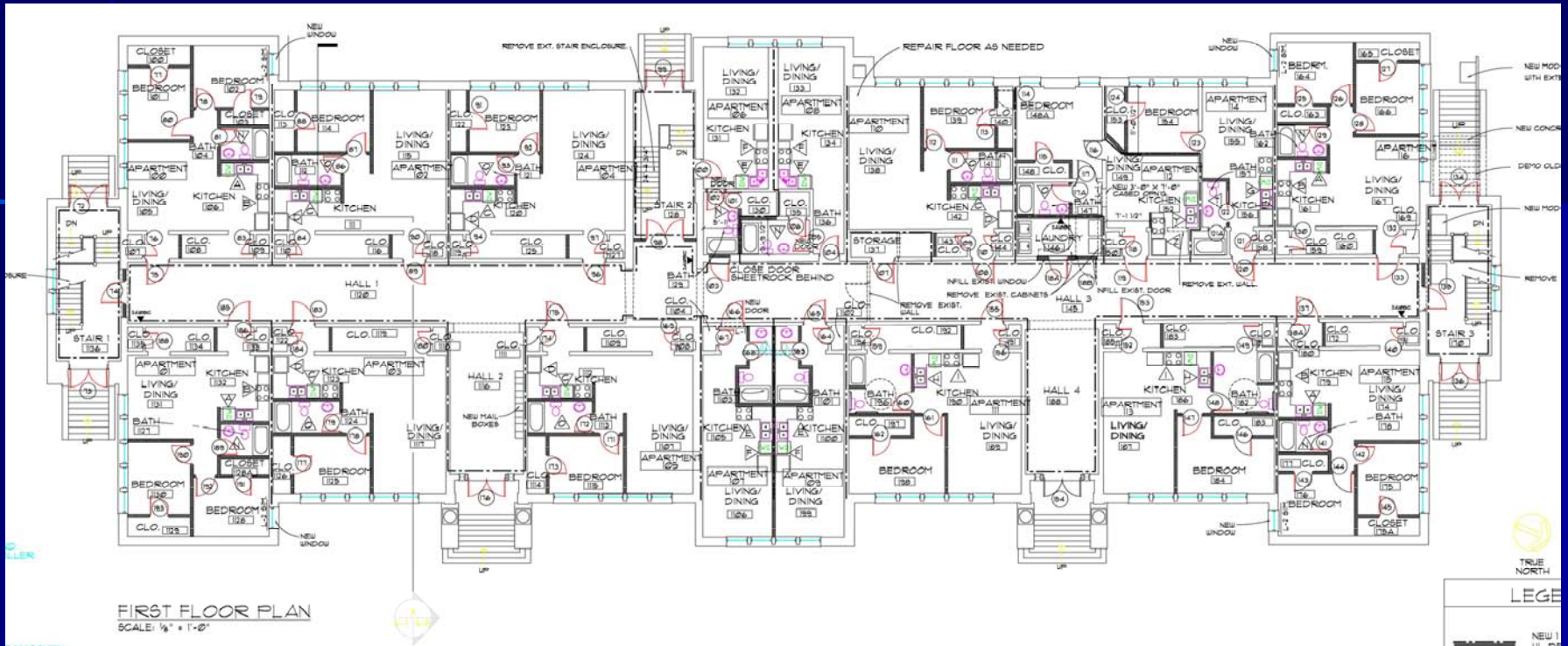
SCALE 1/8" = 1'-0"

NOTE: ALL SQUARE FOOTAGES ARE PAINT TO PAINT AREAS

CAMPBELL MEEK & ASSOCIATES ARCHITECTS, INC.  
 ARCHITECTURE • PLANNING • INTERIORS  
 0408 MAIN REG REC  
 0408  
 3 MAY 2008  
 SPARTANBURG SOUTH CAROLINA  
 CENTRAL SCHOOL APARTMENTS  
 FIRST FLOOR PLAN  
 BIRMINGHAM CITY, N.C.  
 WASHINGTON STREET



Fremont School  
Spartanburg, South Carolina



# Fremont School Spartanburg, South Carolina



# Rehabilitated Windows

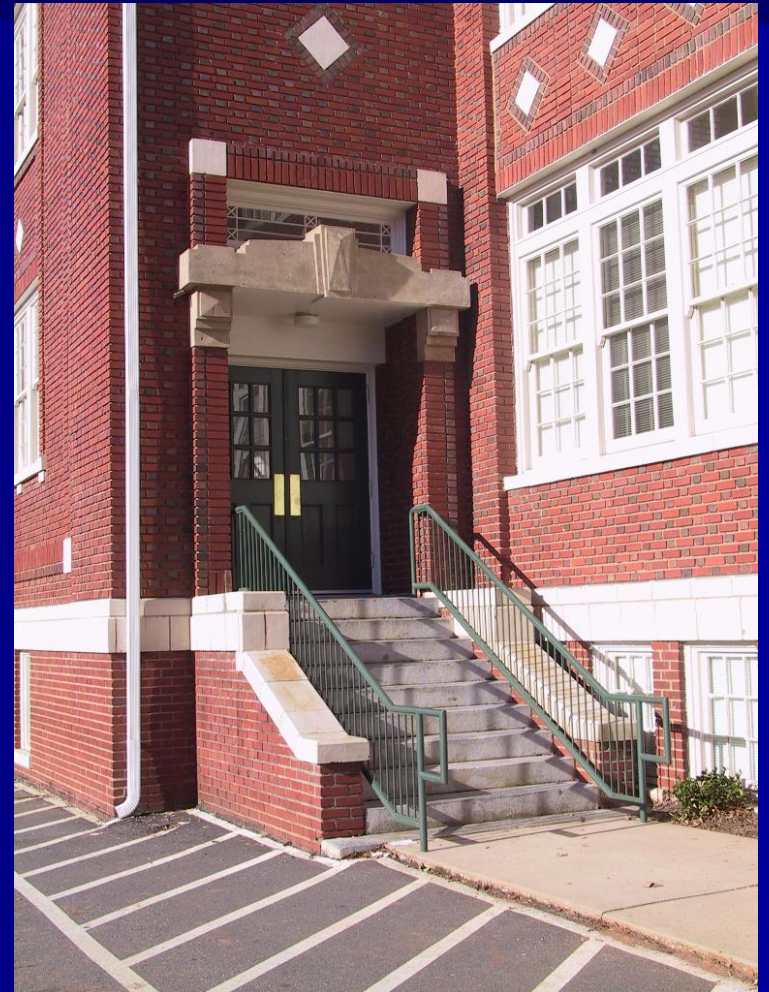




# Site development



# Stairways & Entrances



# Gymnatorium



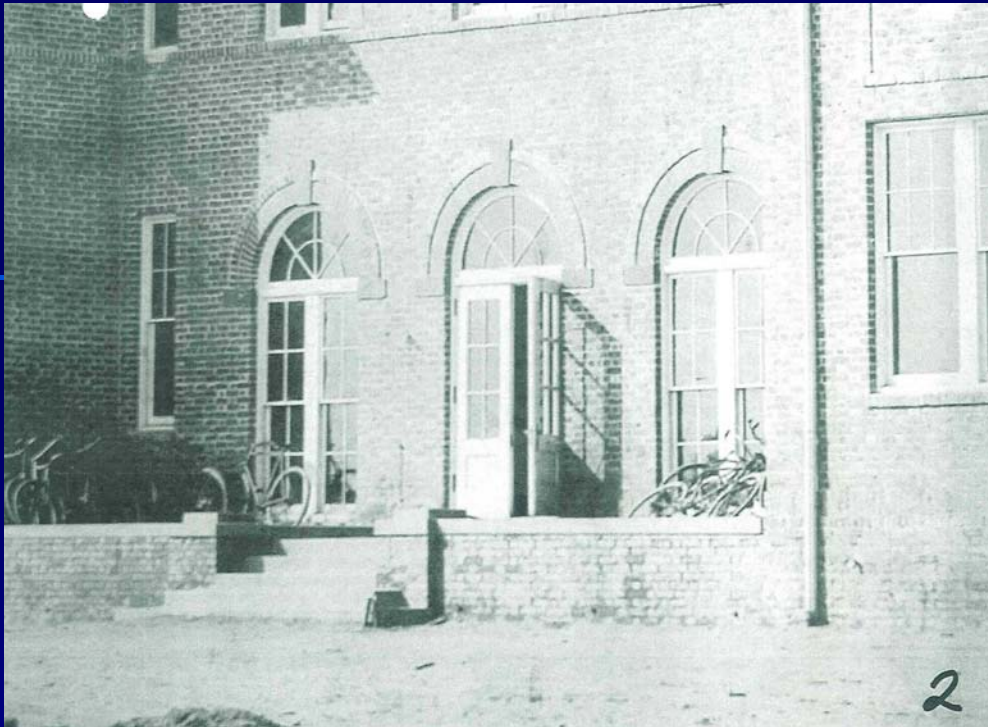
# Front Portico restoration





Kennedy Street School  
Anderson, South Carolina

# Front Terrace restoration



# Window restoration



# Corridor and door retention

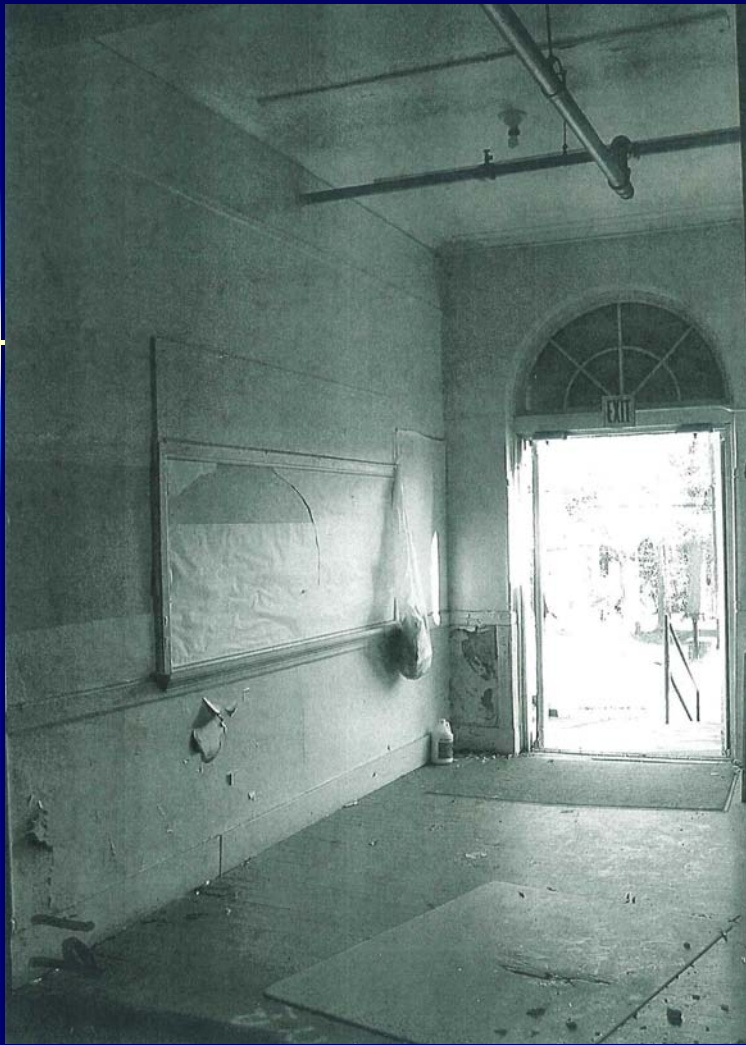




# Partitioning historical classroom space



# Entry restoration



*The South Carolina State Historic Preservation Office is a Registered Provider with The American Institute of Architects Continuing Education Systems. Credit earned on completion of this program will be reported to CES Records for AIA members. Certificates of Completion for non-AIA members are available on request.*

This program is registered with the AIA/CES for continuing professional education. As such, it does not include content that may be deemed or construed to be an approval or endorsement by the AIA of any material of construction or any method or manner of handling, using, distributing, or dealing in any material or product. Questions related to specific materials, methods, and services will be addressed at the conclusion of this presentation.



# Learning Objectives

To better understand the adaptive re-use  
of Historic Schools

**Thank you for your time!**

**QUESTIONS??**

**This concludes The American Institute of Architects  
Continuing Education Systems Program**

**Campbell Meek and  
Associates, Architects**

**[mmEEK@cmaarchitects.com](mailto:mmEEK@cmaarchitects.com)**